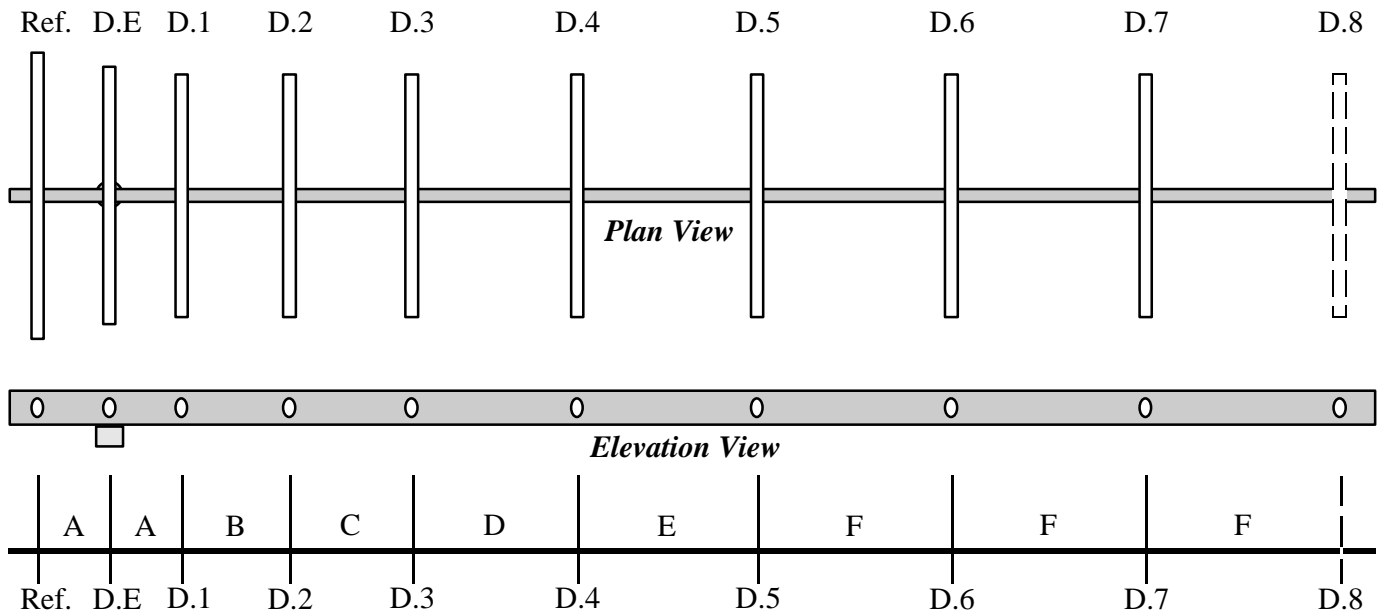


Amateur Television (ATV) Antenna Design 420 - 450Mhz

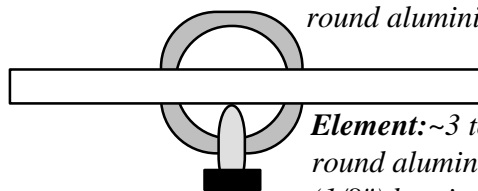
- 1980's design used by VK3KHB -



Element Spacing (Centimetres)

A	09.5cm
B	14.6
C	16.5
D	18.4
E	19.1
F	24.0

Boom: ~10 mm square or round aluminium tube.



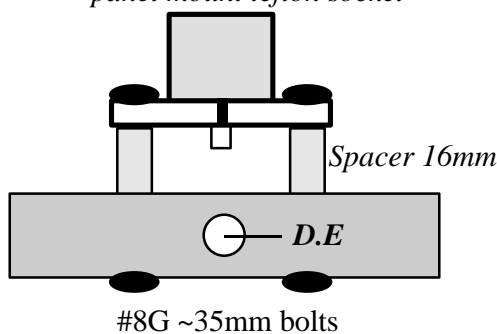
Element: ~3 to 5 mm square or round aluminium rod or bare (1/8") brazing rod.

Locking screw
#8G x 6 - 10 mm

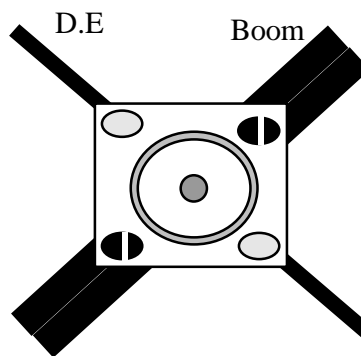
Element Length (Centimetres)

Ref.	34.0cm
D.E	33.3
D.1	30.8
D.2	30.5
D.3	30.1
D.4	29.8
D.5	29.5
D.6	29.2
D.7	28.9
D.8	28.6
D.n	(decrease by 0.3)

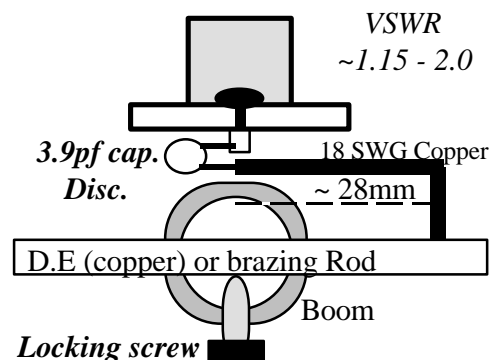
SO239 "UHF" or "N"
panel mount teflon socket



Elevation View



Plan View



Gamma Match
Seal with "neutral cure" silastic.

This old design used parts from most local hardware stores, physical construction can vary, use parts that are strong to withstand winds, light to hoist on a pole, screws & bolts that are rust resistant. Seal the "Gamma Match" in a "neutral cure" silicone, others may chemically attack the solder joins / parts. Elements should be even along the boom, locking screws should just hold element to boom. Element hole should be exactly same size as element or slightly smaller and tapped in with small hammer to maximize holding strength. Driven element can be thick copper wire for easy of soldering.